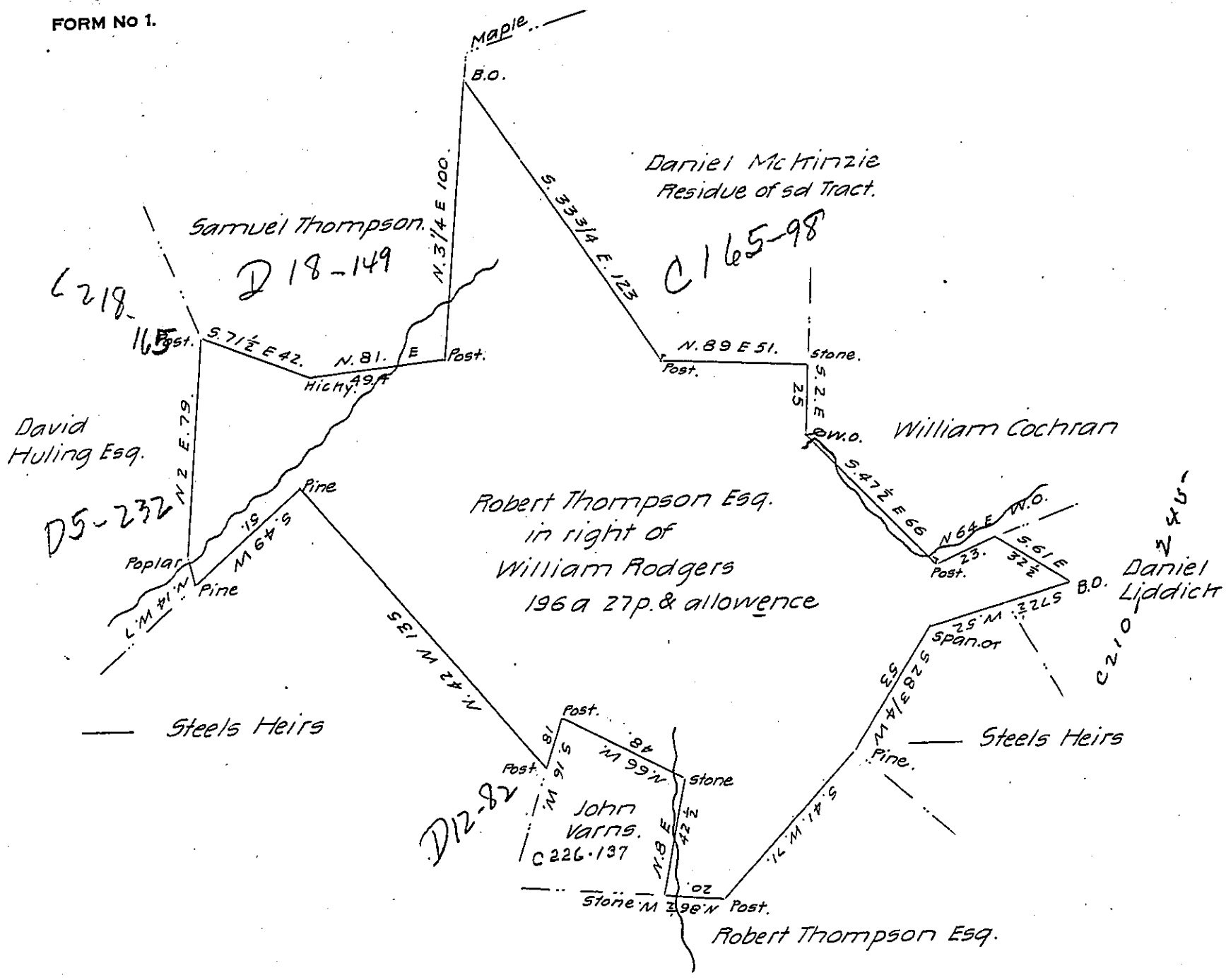


FORM NO 1.



*Draught of land situate in Buffalo Township Perry County Contain-  
 ing one hundred ninety six acres twenty seven perches & allowance of six  
 per cent for roads &c. Part of 310 as 20 p. Surveyed in pursuance of an  
 Order dated May 27th 1768 No. 5005. The above part surveyed for  
 Robert Thompson Esq. to patent March 28th 1832.*

*R— Wm. Wilson D.S.*

*Jacob Spanler Esq. S.G.*

*The draught of Wm. Rodgers is not in this office therefore  
 I could not represent the residue of it by dotted lines.*

**IN TESTIMONY** that the above is a copy of the original remaining on file in  
 the Department of Internal Affairs of Pennsylvania, made  
 conformably to an Act of Assembly approved the 16th day of  
 February, 1833, I have hereunto set my Hand and caused  
 the Seal of said Department to be affixed at Harrisburg,  
 this eighth day of May 1907

*Henry Howe*  
 Secretary of Internal Affairs.